

FAIR PACKAGING SP.ZO.O.

UL GRUZOWA 21 GALOWO 64-500 SZAMOTULY

TEL: -

FAX: -

E-MAIL: tomasz.trad@sgs.com

To the attention of Tomasz Trad

The following sample(s) was /were submitted and identified by/on behalf of the clients as:

Sample Submitted By : FAIR PACKAGING SP.ZO.O.
 Sample Description : Folia HDPE
 Article No. : Not Provided
 Model No. : FOLIA HDPE
 PO / Order No. : Not Provided
 Reference No. : Not Provided
 Client : SGS POLAND
 End Use : Not Provided
 Sample Receiving Date : 13 June 2014
 Testing Period : 13 June 2014 ~ 18 June 2014
 Service Type : NORMAL
 Test Requested : Selected test(s) as requested by client.
 Test Method : Please refer to next page(s)
 Test Result(s) : Please refer to next page(s)

Conclusion : Based on the performed tests on selected part of submitted samples, the results **comply with** the limits as set by RoHS Directive 2011/65/EU Annex II; recasting 2002/95/EC.

The test results relate to the tested items only.
Test reports without SGS seal and authorized signatures are invalid.
Reported results do not include uncertainties.
In this Test Report tests marked (1) are included in the IAS Accreditation Scope of this Laboratory. Opinions and interpretations expressed herein are outside the scope of IAS Accreditation.

Issued in Istanbul
Signed for and on behalf of
SGS Supervise Gözetme Etüd
Kontrol Servisleri A.Ş.

Ayşe Gönen
Customer Services Team Leader

Fatih Çakır
RSTS Manager



"This document is issued by the Company subject to its General Conditions of Service printed overleaf, available on request or accessible at www.sgs.com/terms_and_conditions.htm and, for electronic format documents, subject to Terms and Conditions for Electronic Documents at www.sgs.com/terms_e-document.htm.

Attention is drawn to the limitation of liability, indemnification and jurisdiction issues defined therein. Any holder of this document is advised that information contained hereon reflects the Company's findings at the time of its intervention only and within the limits of Client's instructions, if any. The Company's sole responsibility is to its Client and this document does not exonerate parties to a transaction from exercising all their rights and obligations under the transaction documents. This document cannot be reproduced except in full, without prior written approval of the Company. Any unauthorized alteration, forgery or falsification of the content or appearance of this document is unlawful and offenders may be prosecuted to the fullest extent of the law.
Unless otherwise stated the results shown in this test report refer only to the sample(s) tested and such sample(s) are retained for 30 days only."

Test Part Description :

No.1: Folia HDPE

CTSL-F-5.10-26NF/11.03.2013/Rev.0

"This document is issued by the Company subject to its General Conditions of Service printed overleaf, available on request or accessible at www.sgs.com/terms_and_conditions.htm and, for electronic format documents, subject to Terms and Conditions for Electronic Documents at www.sgs.com/terms_e-document.htm.

Attention is drawn to the limitation of liability, indemnification and jurisdiction issues defined therein. Any holder of this document is advised that information contained hereon reflects the Company's findings at the time of its intervention only and within the limits of Client's instructions, if any. The Company's sole responsibility is to its Client and this document does not exonerate parties to a transaction from exercising all their rights and obligations under the transaction documents. This document cannot be reproduced except in full, without prior written approval of the Company. Any unauthorized alteration, forgery or falsification of the content or appearance of this document is unlawful and offenders may be prosecuted to the fullest extent of the law.

Unless otherwise stated the results shown in this test report refer only to the sample(s) tested and such sample(s) are retained for 30 days only."

Flame Retardants (ROHS)¹

Test Item(s):	Unit	Test Method	Results	MDL	Limit
			1		
Sum of PBBs	mg/kg	With reference to IEC 62321:2013, and performed by GC-MS	n.d.	-	1000
Monobromobiphenyl	mg/kg	With reference to IEC 62321:2013, and performed by GC-MS	n.d.	5	-
Dibromobiphenyl	mg/kg	With reference to IEC 62321:2013, and performed by GC-MS	n.d.	5	-
Tribromobiphenyl	mg/kg	With reference to IEC 62321:2013, and performed by GC-MS	n.d.	5	-
Tetrabromobiphenyl	mg/kg	With reference to IEC 62321:2013, and performed by GC-MS	n.d.	5	-
Hexabromobiphenyl	mg/kg	With reference to IEC 62321:2013, and performed by GC-MS	n.d.	5	-
Pentabromobiphenyl	mg/kg	With reference to IEC 62321:2013, and performed by GC-MS	n.d.	5	-
Heptabromobiphenyl	mg/kg	With reference to IEC 62321:2013, and performed by GC-MS	n.d.	5	-
Octabromobiphenyl	mg/kg	With reference to IEC 62321:2013, and performed by GC-MS	n.d.	5	-
Nonabromobiphenyl	mg/kg	With reference to IEC 62321:2013, and performed by GC-MS	n.d.	5	-
Decabromobiphenyl	mg/kg	With reference to IEC 62321:2013, and performed by GC-MS	n.d.	5	-

CTSL-F-5.10-26NF/11.03.2013/Rev.0

"This document is issued by the Company subject to its General Conditions of Service printed overleaf, available on request or accessible at www.sgs.com/terms_and_conditions.htm and, for electronic format documents, subject to Terms and Conditions for Electronic Documents at www.sgs.com/terms_e-document.htm.

Attention is drawn to the limitation of liability, indemnification and jurisdiction issues defined therein. Any holder of this document is advised that information contained hereon reflects the Company's findings at the time of its intervention only and within the limits of Client's instructions, if any. The Company's sole responsibility is to its Client and this document does not exonerate parties to a transaction from exercising all their rights and obligations under the transaction documents. This document cannot be reproduced except in full, without prior written approval of the Company. Any unauthorized alteration, forgery or falsification of the content or appearance of this document is unlawful and offenders may be prosecuted to the fullest extent of the law.

Unless otherwise stated the results shown in this test report refer only to the sample(s) tested and such sample(s) are retained for 30 days only."

TEST REPORT

Job No./Report No TR620287

Date:18 June 2014

Page 5 of 7

Test Item(s):	Unit	Test Method	Results	MDL	Limit
			1		
Sum of PBDEs	mg/kg	With reference to IEC 62321:2013, and performed by GC-MS	n.d.	-	1000
Monobromodiphenyl ether	mg/kg	With reference to IEC 62321:2013, and performed by GC-MS	n.d.	5	-
Dibromodiphenyl ether	mg/kg	With reference to IEC 62321:2013, and performed by GC-MS	n.d.	5	-
Tribromodiphenyl ether	mg/kg	With reference to IEC 62321:2013, and performed by GC-MS	n.d.	5	-
Tetrabromodiphenyl ether	mg/kg	With reference to IEC 62321:2013, and performed by GC-MS	n.d.	5	-
Hexabromodiphenyl ether	mg/kg	With reference to IEC 62321:2013, and performed by GC-MS	n.d.	5	-
Pentabromodiphenyl ether	mg/kg	With reference to IEC 62321:2013, and performed by GC-MS	n.d.	5	-
Heptabromodiphenyl ether	mg/kg	With reference to IEC 62321:2013, and performed by GC-MS	n.d.	5	-
Octabromodiphenyl ether	mg/kg	With reference to IEC 62321:2013, and performed by GC-MS	n.d.	5	-
Nonabromodiphenyl ether	mg/kg	With reference to IEC 62321:2013, and performed by GC-MS	n.d.	5	-
Decabromodiphenyl ether ##	mg/kg	With reference to IEC 62321:2013, and performed by GC-MS	n.d.	5	-

Note: (a) mg/kg = ppm ; 0.1wt % = 1000 ppm

(b) n.d. = Not Detected

(c) MDL = Method Detection Limit

(d) ## = The exemption of DecaBDE in polymeric application according 2005/717/EC was overruled by the European Court of Justice by its decision of 01.04.2008. Subsequently DecaBDE will be included in the sum of PBDE after 01.07.2008

(e) " - " = Not Regulated

CTSL-F-5.10-26NF/11.03.2013/Rev.0

"This document is issued by the Company subject to its General Conditions of Service printed overleaf, available on request or accessible at www.sgs.com/terms_and_conditions.htm and, for electronic format documents, subject to Terms and Conditions for Electronic Documents at www.sgs.com/terms_e-document.htm.

Attention is drawn to the limitation of liability, indemnification and jurisdiction issues defined therein. Any holder of this document is advised that information contained hereon reflects the Company's findings at the time of its intervention only and within the limits of Client's instructions, if any. The Company's sole responsibility is to its Client and this document does not exonerate parties to a transaction from exercising all their rights and obligations under the transaction documents. This document cannot be reproduced except in full, without prior written approval of the Company. Any unauthorized alteration, forgery or falsification of the content or appearance of this document is unlawful and offenders may be prosecuted to the fullest extent of the law.

Unless otherwise stated the results shown in this test report refer only to the sample(s) tested and such sample(s) are retained for 30 days only."

Heavy Metals (ROHS)¹

Test Item(s):	Unit	Test Method	Results	MDL	Limit
			1		
Cadmium (Cd)	mg/kg	With reference to IEC 62321-5:2013 (Determination of Cd by ICP-OES)	n.d.	2	100
Lead (Pb)	mg/kg	With reference to IEC 62321-5:2013 (Determination of Pb by ICP-OES)	n.d.	2	1000
Mercury (Hg)	mg/kg	With reference to IEC 62321-4:2013 (Determination of Hg by ICP-OES)	n.d.	2	1000
Hexavalent Chromium (CrVI)	mg/kg	-	n.d.*	2	1000

Note: (a) mg/kg = ppm ; 0.1wt % = 1000 ppm

(b) n.d. = Not Detected

(c) MDL = Method Detection Limit

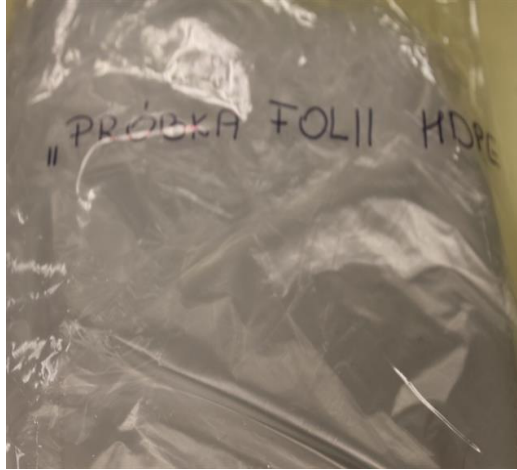
(d) "*" = Test result for Chromium VI is considered as "n.d" since Total Chromium is not found by IEC 62321:2013 test method.

(e) "-" = Not Regulated

CTSL-F-5.10-26NF/11.03.2013/Rev.0

"This document is issued by the Company subject to its General Conditions of Service printed overleaf, available on request or accessible at www.sgs.com/terms_and_conditions.htm and, for electronic format documents, subject to Terms and Conditions for Electronic Documents at www.sgs.com/terms_e-document.htm.

Attention is drawn to the limitation of liability, indemnification and jurisdiction issues defined therein. Any holder of this document is advised that information contained hereon reflects the Company's findings at the time of its intervention only and within the limits of Client's instructions, if any. The Company's sole responsibility is to its Client and this document does not exonerate parties to a transaction from exercising all their rights and obligations under the transaction documents. This document cannot be reproduced except in full, without prior written approval of the Company. Any unauthorized alteration, forgery or falsification of the content or appearance of this document is unlawful and offenders may be prosecuted to the fullest extent of the law. Unless otherwise stated the results shown in this test report refer only to the sample(s) tested and such sample(s) are retained for 30 days only."

620287

* * *

End of Test Report

* * *

"This document is issued by the Company subject to its General Conditions of Service printed overleaf, available on request or accessible at www.sgs.com/terms_and_conditions.htm and, for electronic format documents, subject to Terms and Conditions for Electronic Documents at www.sgs.com/terms_e-document.htm.

Attention is drawn to the limitation of liability, indemnification and jurisdiction issues defined therein. Any holder of this document is advised that information contained hereon reflects the Company's findings at the time of its intervention only and within the limits of Client's instructions, if any. The Company's sole responsibility is to its Client and this document does not exonerate parties to a transaction from exercising all their rights and obligations under the transaction documents. This document cannot be reproduced except in full, without prior written approval of the Company. Any unauthorized alteration, forgery or falsification of the content or appearance of this document is unlawful and offenders may be prosecuted to the fullest extent of the law.

Unless otherwise stated the results shown in this test report refer only to the sample(s) tested and such sample(s) are retained for 30 days only."